

TAXING UNIT :58

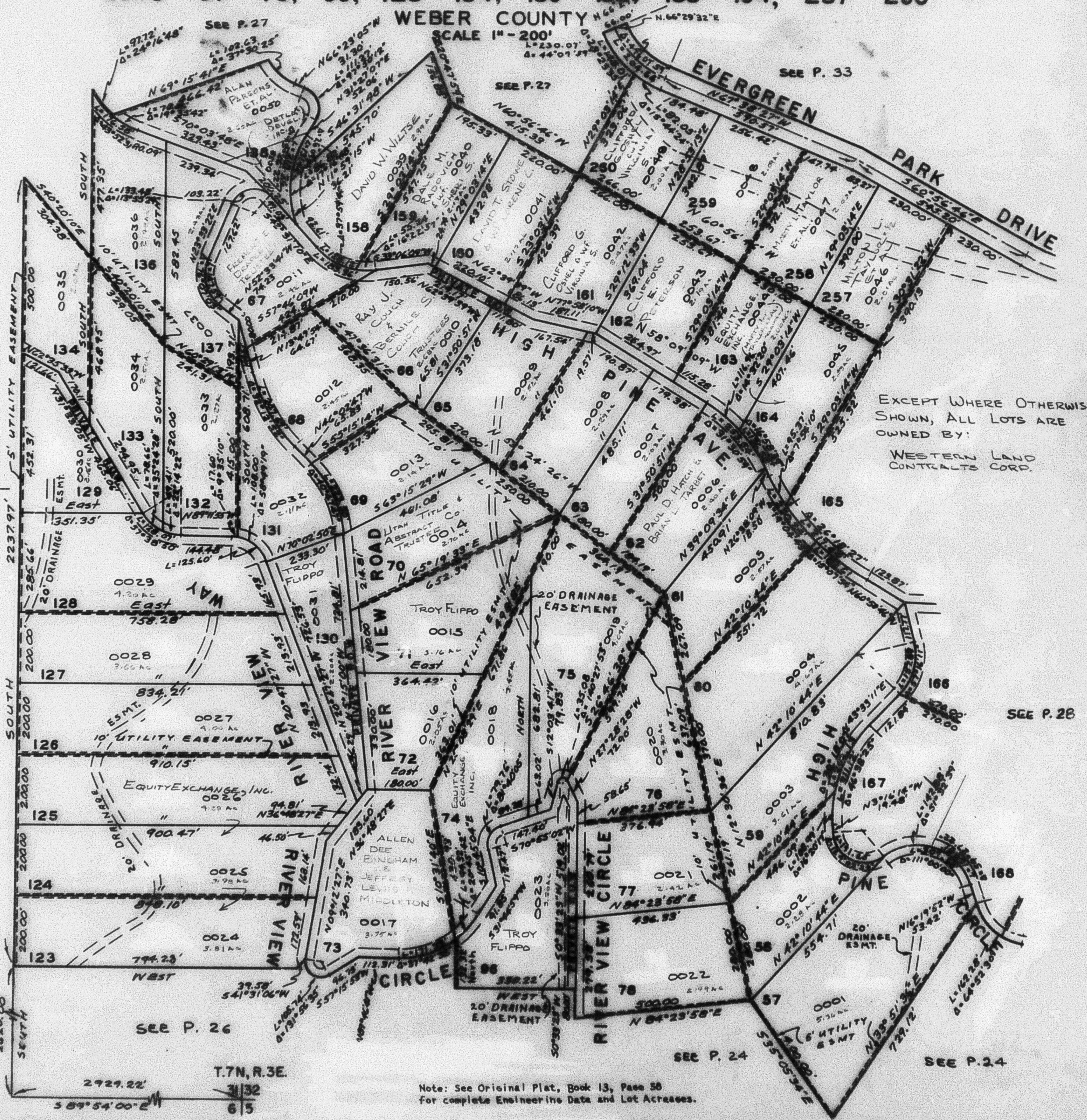
EVERGREEN PARK SUBDIVISION NO.1

LOTS 57 - 78, 96, 123 - 134, 136 - 138, 158 - 164, 257 - 260

PREFIX:23-025

WEBER COUNTY

SCALE 1" = 200'



EXCEPT WHERE OTHERWISE SHOWN, ALL LOTS ARE OWNED BY:
WESTERN LAND CONTRACTS CORP.

Note: See Original Plat, Book 13, Page 56 for complete Engineering Data and Lot Acres.